

**JANUARY
11 & 12, 2014**



Presented By





Field Rentals & Events
Soccer for Toddlers
Soccer Birthday Parties
Summer Camps
Recreational Leagues

Consession stand - Arcade - Pay per view events

come visit our new soccer store!



75,000 sq ft of pure fun!



Birthday Party
\$50 OFF

Bounce House • Arcade • Ping Pong
 Billiard • Basketball • Food & Drinks
 Not valid w/any other offers.

Field Rentals
\$40 OFF

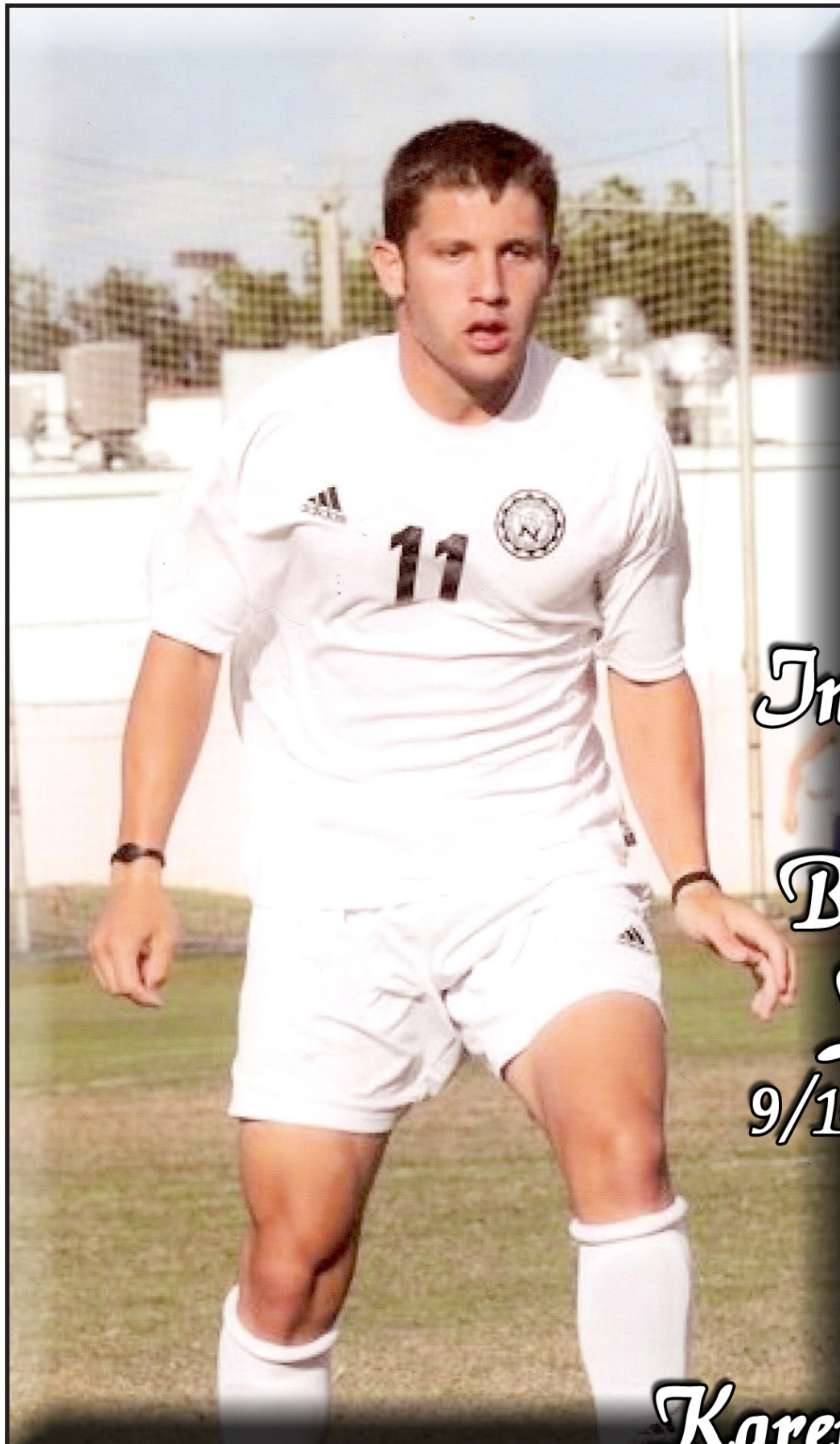
1 Hr minimum.
 Reg. \$120
 Not valid w/any other offers.

MORE INFO AT 561 223-2042

WWW.CITYSOCCERINDOOR.COM



1016 Clare Avenue West Palm Beach, FL 33401 (Minutes from CityPlace)



*In Memory
Of Our
Beloved Son
Houston
9/14/89 - 3/9/12*

*Love,
Karen & Peter
Lillo*



WE PROUDLY SUPPORT *The Wellington Soccer Club*

The Center for Bone and Joint Surgery offers leading orthopedic care with specialties in total joint replacement, sports medicine, neck and back, shoulder, elbow, hand, foot and ankle, general orthopedics, broken bones, trauma and reconstructive surgeries.

On-site Physical Therapy, Occupational Therapy, Aqua Therapy, X-Ray/MRI, EMG/NCS, Outpatient Surgery.

Offices in *Wellington, Royal Palm Beach, Belle Glade, Boynton Beach*, and *West Palm Beach*. Call for more information or visit our website.

Same day appointments.

(561) 798-6600

Call or go online to request your appointment.



www.boneandjoint.org

GAME'S OVER! YOU KNOW WHERE TO GO



Located at the corner of
FRESH & FAST



PDQ WELLINGTON

2781 S. State Road 7 • 561.210.4350

eatPDQ.com

YOUR NEIGHBORHOOD REAL ESTATE COMPANY

•Real Estate •Investments •Short Sales •Rentals •Buy •Sell •Foreclosures •We Do It All...

serving palm beach county and beyond!



CONTINENTAL PROPERTIES

WWW.PBFL.COM

**SEARCH THE
MLS LIKE
AN AGENT**

<< CLICK HERE >>

MULTIPLE LISTING SERVICE

MLS



GO TO
WWW.PBFL.COM
TO SEARCH ALL LISTINGS ON THE MLS

CALL **561-747-7770** FOR A
COMPLIMENTARY ANALYSIS OF YOUR
PROPERTY TODAY!



FLORIDA

WELLINGTON SOCCER CLUB

LETS SHOOT FOR THE GOAL TOGETHER!

**OUR FAMILY HAS BEEN SUPPORTING PALM BEACH COUNTY FOR 20
YEARS WITH FOUR FULL SERVICE LOCATIONS, WE COME TO YOU!**

**MENTION THIS AD AND WE WILL DONATE \$250 FROM YOUR
TRANSACTION TO YOUTH SOCCER WHEN YOU SELL OR BUY WITH US**

Owner Broker Myles and Kathy Minns



FoodTrack of Wellington is pleased to support the **Wellington Soccer Club**



New York • Florida • Atlanta

FoodTrack Inc. is the global leader in providing 24/7 preemptive reporting and manned incident surveillance on product recalls, outbreaks, tampering incidents and other food defense threats. As an exclusive strategic partner to the food industry at large, including Regional & Multinational Companies, Trade Associations, the U.S. Military and Federal Regulators, FoodTrack mitigates risk and contributes to protecting consumer health.

KIRABO SEEDS

A FATHER TO THE FATHERLESS, A DEFENDER OF WIDOWS IS GOD IN HIS HOLY DWELLING. - PSALM 68:5



It costs 300 dollars a year to sponsor a child in our program. All of the sponsor money goes directly to help the children. We fundraise separately to pay for other ministry costs.

Please Contact: Tonya LaTorre
281-605-9158 or
tonya@kiraboseeds.com
for more information:
www.tonyalatorre.wordpress.com



Kirabo Seeds is a Christian 501 © 3 non-profit organization called to care for orphans in Uganda by creating a family for them. In March 2012 we welcomed fourteen children to join our home at Kirabo Seeds in Kampala Uganda. All of these children have been totally orphaned by AIDS. We have assembled a team of Christians who live with them and help us raise and protect these children in the instruction of the bible. We provide a healthy diet, health care, shelter, clothing, school fees and resources for learning God's word. We need sponsors to give these children opportunity to discover who God created them to be. We hope you will follow your heart and consider changing a child's life.



OB/GYN SPECIALISTS

of the Palm Beaches, P.A.

Excellence in Women's Health and Wellness Since 1968

Samuel Falzone, MD
Julie Pass, MD
Athena Atkinson, CNM

Melissa Carlson, MD
Steven Fern, MD
Debra Balliram, DO

Specializing In All Women's Needs:

We Provide

Gynecological/Obstetrical Care & Infertility Care

Minimally Invasive Surgery & Laparoscopic Procedures

With Specialists In:

Da Vinci Robotic Surgery

High Risk Obstetrics Care and Genetic Counseling

IVF Procedures with Dr. Mick Abae

Oncology

4-D Ob Ultrasound

***Digital Mammography & Bone Density**

(*available in our North Point/PGA facilities)

561-790-5990

1447 Medical Park Blvd, Suite 300
Wellington, FL 33414

6080 W. Boynton Blvd., Suite 260
Boynton Beach, FL 33437

We have Offices in West Palm, PGA and Jupiter



On behalf of the Wellington Soccer Club, I would like to welcome everyone to our annual tournament - The Wellington Soccer Shoot-Out.

Tournaments are a great way for teams from different areas to meet and play several games over a short period of time. They allow for teams to promote sportsmanship, teamwork, and the game of soccer. With over 180 talented teams from around the state of Florida, it should be a great weekend of highly competitive soccer.

I would like to share a special thanks to the tournament committee and all the volunteers who helped to make this weekend a success. Additionally, we would like to thank the Village of Wellington and the Parks and Recreation Department for their continued support and some of the best soccer facilities around.

Good luck to all the teams this weekend. We hope everyone enjoys their visit to Wellington and has a safe and successful tournament.

We hope to see you again next year,

Samuel Falzone
President
Wellington Soccer Club, Inc.



Wellington Soccer Club, Inc.

A Non-For-Profit Corporation

P. O. Box 211855, Royal Palm Beach, FL 33421-1855

Phone: (561) 333-7129

Council

Bob Margolis, Mayor
Howard K. Coates, Jr., Vice Mayor
Matt Willhite, Councilman
Anne Gerwig, Councilwoman
John Greene, Councilman

Manager

Paul Schofield

Dear Wellington Wave Soccer Shootout Participants,

On behalf of our residents and businesses in Wellington, the Village Council welcomes the athletes, parents, officials and spectators participating in the Wellington Wave Soccer Shootout to our Great Hometown. Wellington has a rich history of athletic competition and is proud to again host this great event. We are fortunate to have a nationally accredited Parks and Recreation Department and outstanding partners like the Wellington Soccer Club to enable us in providing premier sporting events. We know last year's tournament was a big success and we are confident this year's will be even better!

While you are here, please take a tour of our Village, enjoy our restaurants and shops, or visit one of our world-class equestrian venues. You'll see why Wellington is a Great Hometown! Good luck to all the teams!

Sincerely,



Bob Margolis, Mayor
Village of Wellington



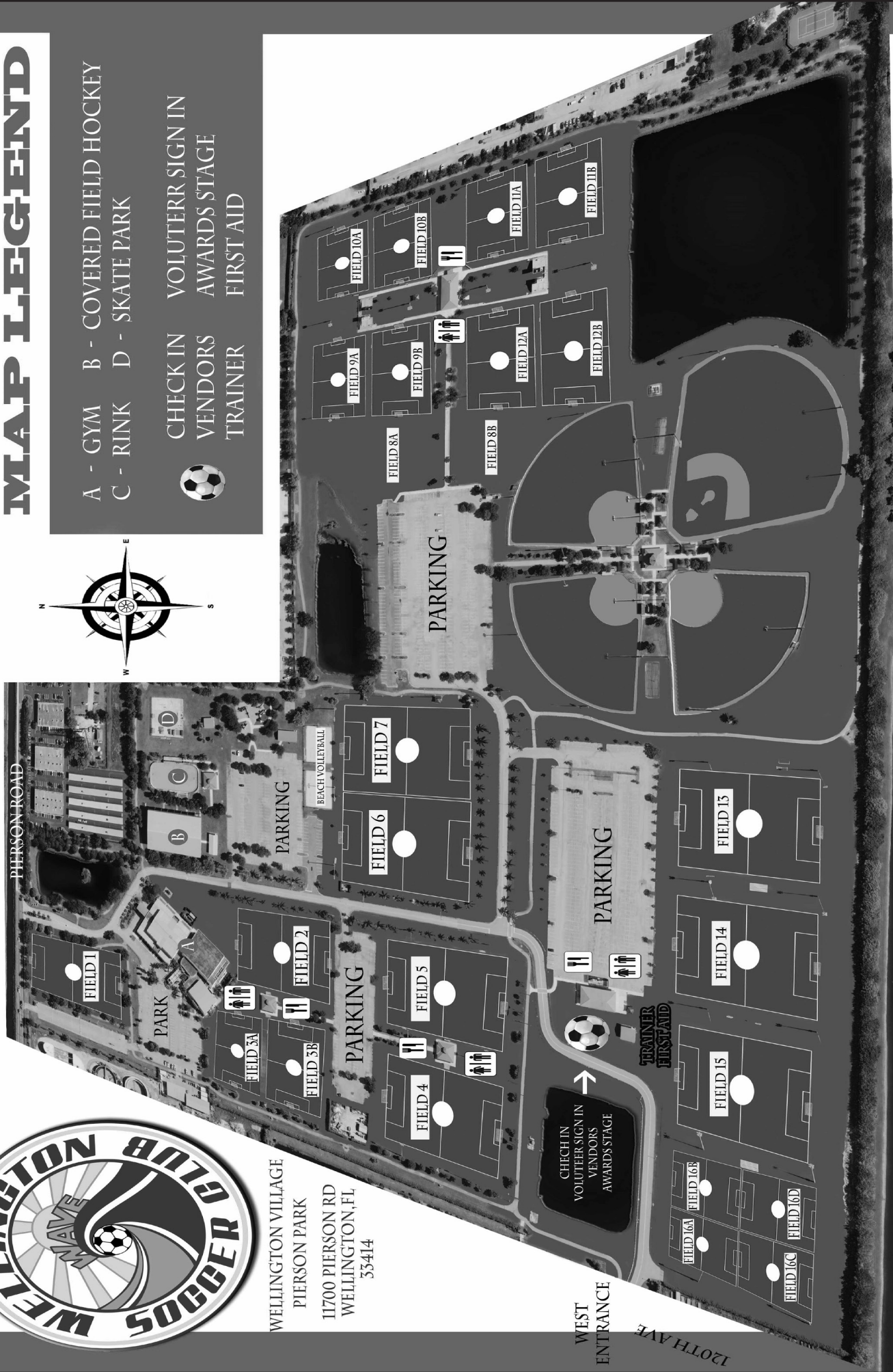
WELLINGTON VILLAGE
 PIERSON PARK
 11700 PIERSON RD
 WELLINGTON, FL
 33414

MAP LEGEND

A - GYM B - COVERED FIELD HOCKEY
 C - RINK D - SKATE PARK

CHECK IN
 VENDORS
 TRAINER

VOLUTERR SIGN IN
 AWARDS STAGE
 FIRST AID



WEST
 ENTRANCE

120TH AVE

2014 TOURNAMENT RULES

The rules of this tournament shall be in accordance with US Youth Soccer and FYSA except as modified and approved herein.

1. TEAM ELIGIBILITY - This tournament shall be open to all teams as indicated on the Application to Host approved form, comprised of properly registered youth players (as defined by the rules of US Youth Soccer or their National Youth governing body) provided such team is in good standing with its youth association.

Any team entering this tournament may include up to 3 guest players on their roster.

It shall be the responsibility of each State Association to certify the eligibility of its competing teams and to provide such teams with a certified copy of the roster, permission to travel, and proof of insurance.

2. PLAYER ELIGIBILITY – **US Youth Soccer** players must be legally registered to US Youth Soccer through their respective state association according to US Youth Soccer registration requirements. All teams must have current US Youth Soccer or approved organization Player Passes, or the appropriate National Association Passes to participate. Passes must be verified, laminated and with photo attached. A player may only play on one team during the tournament.

3. AGE CLASSIFICATION:

AGE GROUP BIRTH YEAR

- **U9** **8/1/04**
- **U10** **8/1/03**
- **U11** **8/1/02**
- **U12** **8/1/01**
- **U13** **8/1/00**
- **U14** **8/1/99**
- **U15** **8/1/98**
- **U16** **8/1/97**
- **U17** **8/1/96**
- **U18** **8/1/95**

4. GAME SCHEDULE - Team pairing, field of play, times of play shall be accomplished by random draw with adjustment only to secure equity. Teams should play no more than two matches per day and will not play any back to back games. Referees shall be assigned by an approved assignor in accordance with FYSA and FSR assignment procedures.

5. PRE-GAME PROCEDURE - The Tournament Officials shall conduct all credentials checks at Registration and at the field prior to each game to insure that all players are registered with US Youth Soccer, and to insure that all players are properly rostered with their team and that all are participating in accordance with representations set forth on the Application to Host Tournament Form.

Official Organizational roster forms will be validated, medical release forms turned in and passes checked at the Team Check-in. The manager/coach must be present at Team Check-in and must present the original organizational roster form and 2 copies.

Field Marshals will conduct the pre-game check-in when appropriate, in order to minimize delay between games. The referee will review the results of the check-in with the field marshal and make the final ruling on any questions.

Pre-Game Check-in will be conducted as follows:

The manager/coach of each team will present a validated copy of the roster and all player passes and coaches pass.

The Field Marshal or Referee will verify the identity of each player with each player pass and confirm that all players present are listed on the roster. All coaches will be identified with their coach's pass. All passes and the roster will be held by the Field Marshal or Referee during the game.

Players' uniforms and equipment will be checked and any conflict resolved.

Only at this pre-game procedure may a player be challenged by an opposing manager/coach. Challenged players will be noted by the Referee on the Referee game report, but will be allowed to participate in the game so long as they have valid, verified player passes and are listed on the validated roster.

A player who arrives at the playing field after the Pre-game procedure, may enter the game once the game officials verify the player is eligible and with the permission of the center referee. A late arriving player may be challenged at the time he is allowed to participate by the center official.

Each manager/coach or assistant must have a valid coach's pass. If a manager/coach is ejected, his assistant may conduct the team. If the assistant is also ejected or if there is no assistant, the game will be declared a forfeit and the score recorded as

4-0. in no case will the team be allowed to participate without a properly registered coach or assistant.

The tournament committee recommends souvenir patches, pins, etc. may be exchanged and group pictures may be taken at the pre-game procedure or during the handshake after the game.

6. LAWS OF THE GAME - Except where modified herein, rules of play shall be FIFA "Laws of the Game." Competition sanctioned by this Association shall abide by the "Laws of the Game," along

with any modifications or regulations of the Association. Players U9 and U10 must play with the rules of Development Player Program - modified playing rules for U10, U 9

*** No Off-sides will be enforced for U/9 & U/10 as all regions will be represented in this tournament**

LAW I - THE FIELD OF PLAY -

The field of play will conform to the following dimensions:

11v11:

minimum 50 x 100 yds, maximum 100 x 130 yds

goals 8 x 24 ft.

8v8:

Min. 45 x 70 yds., Max. 50 x 80 yds.

with markings proportionate and goals 7 x 21 ft.

6v6:

Min. 35 x 50 yds., Max. 45 x 60 yds.

With markings proportionate and goals 6 x 18 ft. to 7 x 21 ft.

LAW II - THE BALL - The size of the ball will be as follows:

U9 to U12 , Size #4, 25-26 circum., 11-13 oz.

U13 & over, Size #5, 27-28 circum., 14-16 oz.

LAW III - NUMBER OF PLAYERS

U18, U17, U16, U15, U14, U13, will play 11 players on the field per side, max 18 players on the roster. U11 and U12 will play 8 players on the field per side, max 14 players on the roster. U9 and U10 will play six players on the field per side, max 12 players on the roster.

Substitutions - Substitution shall unlimited and may be made only with the Referee's permission at the following times:

- a. Prior to a throw-in by your team.
- b. Prior to a goal kick by either team.
- c. After a goal by either team.
- d. At half time or the beginning of overtime periods.
- e. After an injury, by either team, when the referee stops play.

Substitutes may enter field of play only after receiving permission from the referee.

LAW IV - PLAYERS EQUIPMENT - Players equipment shall meet these additional requirements

a. All players shall be required to wear protective shin guards (to be worn beneath their game socks) at all times while actively participating in the game. Such shin guards shall be of the type and style of protective athletic equipment specifically designed to protect the player's lower leg (shin bone).

b. Teams will wear uniforms of matching design and color with six inch numbers on the backs. Players' uniform numbers are to be affixed to the back of the uniform shirt; no two players from one

team may have an identical uniform number while both are playing on the field at the same time. Where colors of competing teams are identical or similar, the designated home team must effect a change to colors distinct from their opponents'. Teams dressed in predominately black uniforms will be responsible for providing the referee and linesmen with jerseys in a color distinctly different from the uniforms worn by either competing team.

c. Goalkeeper's Uniform: The uniform or jersey of a goalkeeper must be distinctly different in color from the basic colors of either competing team.

d. Illegal Equipment: In accordance with the Laws of the Game, the referee shall be responsible to insure that no player wears anything which may cause injury to himself or another player.

e. Casts and Braces: Orthopedic casts are not permitted; however, soft braces can be worn with **written** approval from a doctor, and judgment as to safety is at the discretion of the referee.

A player may be removed from the game if at any time the referee determines a player is using or attempting to use the brace to injure another player.

LAW V - REFEREES - All referees will be U.S.S.F. currently certified. Referees are required to turn in an official game report as directed by the Tournament Committee and are required to submit an Incident Report of the names and teams of all players issued red , yellow cards, injuries and details of any other matters involving the improper or unsportsmanlike conduct of a team, its players, coaches or supporters.

LAW VI – ASSISTANT REFEREES - Two assistant referees will be used. In the event the assigned assistant referee fails to appear, the referee shall find an alternate. The game will be played as scheduled and will be deemed official.

LAW VII - DURATION OF THE GAME - the duration of games will be as follows

	<u>pool games</u>	<u>semis & finals</u>	<u>overtime/mini game</u>
U18, & U17	2 x 30 = 60 mins.	2 x 45 = 90 mins	2 x 5 = 10 mins
U16 and U15	2 x 30 = 60 mins.	2 x 40 = 80 mins	2 x 5 = 10 mins
U14 and U13	2 x 30 = 60 mins.	2 x 35 = 70 mins	2 x 5 = 10 mins
U12 and U11	2 x 30 = 60 mins.	2 x 30 = 60 mins	2 x 5 = 10 mins
U9 & U10	2 x 25 = 50 mins.	2 x 25 = 50 mins	no overtime, directly to P.K.'s

*If the game is still tied after overtime the game will go into PK'S

LAW VIII THROUGH XVII NO CHANGE.

7. CONTROL OF SIDELINE CONDUCT - Players, reserve players, managers, coaches, assistant coaches and fans are expected to conduct themselves with the letter and spirit of "THE LAWS OF THE GAME." The site directors have the authority and responsibility to remove any person(s) from the tournament for abuses to good conduct, in addition to any specific disciplinary action brought about by other authority. In addition to the rules of good manners, these rules will apply :

a. The Site Director will designate one sideline to be for the sole use of players listed on the game

rosters, and two managers/coaches from each team, with one team occupying one side of midfield and one team the other. While the game is in progress, the manager/coach and reserve players must remain on their respective benches and not roam the sidelines.

b. The Site Director will designate the opposite sideline for spectators and fans.

c. A restraining line shall be drawn 3 yards from the side touch-line and all sideline viewers must remain outside of that line to protect linesmen.

d. Manager/coaches will be responsible for behavior of their fans.

8. TOURNAMENT RULES - BEHAVIOR - The Tournament Committee shall insure that the rules of the tournament and the behavior of teams, players, coaches and spectators on the sideline is appropriately controlled.

a. The issuance of red and yellow cards will be reported on the game report along with an incident report. Disciplinary action will be suspension from game or games in the tournament. A player receiving 3 yellow cards during Pool Play will not be permitted to play in the Final game.

b. All disciplinary measures imposed by the tournament Disciplinary Committee shall be limited to placing restrictions upon an individual's or group's participation in the tournament.

c. The issuance of all red and yellow cards and other matters involving the conduct of a team, its players, coaches or supporters will be recorded. All matters involving a referee assault and/or abuse shall be handled in accordance with USSF, which shall immediately be referred to the host state association.

d. The home state association and the home club/league of the player, coach, team, or supporters, shall, except in the case of referee assault and /or abuse , have the responsibility for imposing, should the circumstances warrant, additional sanctions within their respective jurisdictions, with regard to any matters arising from the tournament.

e. When Discipline/Sanctions are imposed, they must meet the required minimums as specified by FYSA and/or USSF. The Disciplining body must evaluate the incident as to intent, severity and past misconduct to determine the appropriate disciplines/sanctions. More severe disciplines/sanctions shall be imposed for multiple red cards during a season and for misconduct directed towards officials or administrators.

f. Follow 502 rule

9. POST GAME PROCEDURE - We ask that as a mutual courtesy, both teams congratulate each other for a game well played.

1. The Referee or Field Marshals will insure the return of all player passes to the Site Director Desk.
2. Referee will complete the Game Report and deliver it with any incident reports to the Site Director Desk.

3. Manager/coach of both teams will confirm the score with the site desk and collect the passes after each game.

4. Manager/coach of both teams will insure that their sideline area is clean and that all trash is in containers.

10. DISCIPLINE - The Disciplinary Committee (which will be named prior to the tournament) will consist of at least three members and will review and rule on all reports of unacceptable conduct by players, coaches, referees, spectators, etc.

All decisions shall be included in the post tournament report. Depending upon the severity of the unacceptable conduct, the Disciplinary Committee may recommend suspension up to the duration of the Tournament. Further disciplinary action by the FYSA or national association may be recommended.

11. DELAY OF START - Any team delaying the start of a scheduled game by more than 15 minutes without authorization from the tournament director shall forfeit the game to the opponent. Forfeits will be recorded with a score of 4 to 0.

12. PROTEST - There will be NO PROTESTS. All disputes will be resolved immediately by the Site Director/Tournament Director. These decisions will be final.

13. DETERMINATION OF TEAM ADVANCEMENT AFTER QUALIFYING PLAY - There will be no overtime games in qualifying play. Standings in a group will be determined by the following game points: 3 points for win, 1 for tie, 0 for loss.

IF TWO TEAMS TIE IN GAME POINTS:

FIRST: Head to Head result

SECOND: Net goal differential with a maximum of four goals per game.

THIRD: Most goals scored up to 4 per game.

FOURTH: Least Goals Allowed

LAST: Penalty Kicks according to FIFA Taking of Kicks from the penalty mark

IF THREE OR MORE TEAMS TIE IN GAME POINTS:

FIRST: Net goal differential with a maximum of four goals per game.

SECOND: Most goals scored up to 4 per game.

THIRD: Least Goals Allowed

LAST: Penalty Kicks according to FIFA Taking of Kicks from the penalty mark

14. DETERMINATION OF SEMI-FINAL (if applicable) AND FINAL GAME WINNERS -

In semi-final and final games, if the game is not decided after regulation times, overtime will be played in accordance with LAW VII. If still not decided after overtime, penalty kicks will be taken in accordance with FIFA "Taking of Kicks from the Penalty Mark." 9U and 10U will not play overtime. They will go directly to penalty kicks if the game is undecided at the end of regulation play.

15. EXTERNAL CONDITIONS, WEATHER, ETC. - In the event unusual conditions necessitate

rescheduling, curtailment, or cancellation of games, the Tournament Director shall have absolute authority to make these changes to best serve the interest of the tournament as a whole, keeping in mind the need to successfully identify winners by a certain time period.

16. AWARDS CEREMONIES –

Following the completion of final games, both teams will present themselves to the awards area where individual and team awards will be presented.

17. GENERAL -

1 Any tournament that fails to return/refund an entry fee per the time lines listed below will be subject to an assessment fine not to exceed ten (10) times the original entry fee. Any report of violation of the above will be referred to the Tournament and Travel Committee. Failure to pay the assessed fine could result in the hosting affiliate/associate affiliate being placed in NGS with FYSA. Future approval requests to host tournaments by the affiliate/associate affiliate could also be denied.

Tournament entry fee returns/refunds as follows:

- A. Within five (5) days after notification that the team is not accepted by their application.
- B. Within five (5) days upon cancellation of the tournament.
- C. Within ten (10) days of withdrawal request of the application by a team prior to acceptance of that application by the tournament.

2- If not enough teams are realized within a specific age bracket, the Tournament Director shall notify the participants as soon as possible and the participants will be given the option to play up or receive a full refund.

3- The Tournament Committee, the host affiliate and the FYSA's interpretation of the foregoing rules and regulations shall be final.

4- The Tournament Committee reserves the right to decide on all tournament matters.

5- The Tournament Committee has the responsibility to uphold any previous suspension imposed by FYSA/US Youth Soccer.

6- There will be a copy of the tournament rules at all game sites.

WELLINGTON SOCCER CLUB

CONTACTS

Director of Coaching

Patrick Zoete
zoetep@bellsouth.net
(561) 252-1467 (Cell)

Board of Directors

President	Sam Falzone – Falzone@bellsouth.net
Vice President – Girls	Chris Auger – augers@bellsouth.net
Vice President – Boys	Eric Gary – hoverawn2@gmail.com
Vice President – Operations	Shannon Curry – slc8067@comcast.net
Vice President – Community Affairs	Jorge Suarez Jr – Jorge@wedgworth.com
Secretary	Jacqueline Sullivan – headset@comcast.net
Treasurer	Doug Sunshine – douglas.sunshine@abbott.com

Staff

Accountant / Bookkeeper	Kim Sullivan – jkmsully@bellsouth.net
Administrator	Pete Lillo – lillop@bellsouth.net
Concession Stand Manager	Jerome Broz – jeromebroz@yahoo.com
Concession Stand Asst Mgr	Tom Laura – tjl3909@gmail.com
Referee Assigner	Phil Wenzofsky – weasel@bellsouth.net
Registrar	Dana Garraputa – dgarraputa@aol.com
Uniform Coordinator	Tanya Galvant – galvant@bellsouth.net
SFU League Rep	Yaron Lerer – yaronlerer@bellsouth.net
FLUGSA Rep	Monica Stephens – wavemcs@gmail.com
PBSL Rep	Teri Ivaniszyn – teriivan11@gmail.com

AL PACKER



AL PACKER



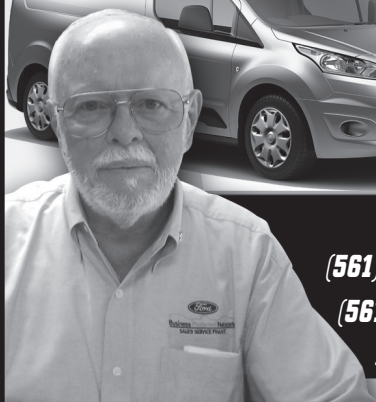
WEST

**LARGEST COMMERCIAL
FLEET DEALERSHIP**

**WANTS TO WISH ALL
TOURNAMENT TEAM PARTICIPANTS
Good Luck!**

*"I am a member of a team, and I rely on the team,
I defer to it and sacrifice for it because the
team, not the individual, is the ultimate champion."
- Mia Hamm*

**Your Commercial Vehicle Specialist
Serving All Of South Florida!**



John Riley
(561) 868-2806 Tel.
(561) 818-5424 Cell
jriley@alpackerford.com

**Over
32
Years
Experience**

Alfred Arzapalo
(561) 689-6550 x.212
(561) 951-4086 Cell
aarzapalo@alpackerford.com



A black and white photograph of a young boy with short, dark hair, smiling broadly at the camera. He is wearing a dark-colored soccer jersey with white trim around the V-neck and on the sleeves. He is also wearing dark shorts with white trim. He is holding a soccer ball with both hands in front of him. The background is a light, textured surface with a subtle pattern of small, dark shapes. The overall tone is bright and positive.

Score a Winning Smile!

Now Accepting New Patients
Call today to schedule an appointment

561.899.0524

•Main Street•

Children's Dentistry
& Orthodontics

11903 Southern Blvd., Suite 102

Royal Palm Beach, FL 33411

www.mainstreetsmiles.com





KEYSTONE CHIROPRACTIC

- Arm Pain
- Carpal Tunnel (Wrist)
- Canal Stenosis
- Degenerated Joints
- Digestive Disorders
- Disc Herniation
- Dizziness (Vertigo)
- Dowager's Hump
- Fatigue
- Fibromyalgia
- Headaches
- Hearing Issues
- Itchiness
- Low Back Pain
- Mid Back Pain
- Migraine Headaches
- Muscle Spasm
- Muscle Tension
- Neck Pain
- Numbness/Tingling
- Pinched Nerve
- Poor Posture
- Rotator Cup Issues
- Shoulder Pain
- Sinus Conditions
- Spinal Decay
- Strength Issues
- Thoracic Outlets
- TMJ Issues
- Upper Back Pain

Royal Palm Beach office

KEYSTONE CHIROPRACTIC

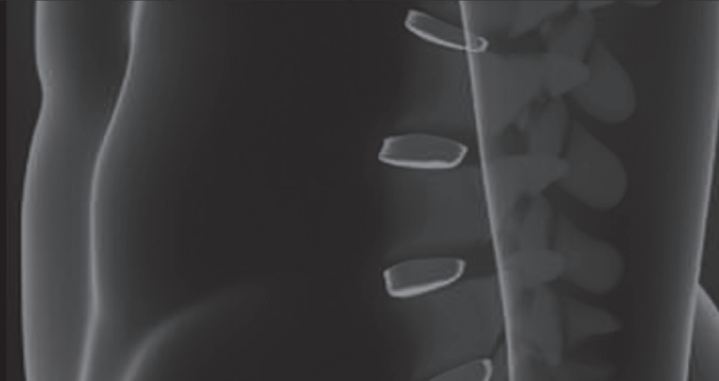
420 State Road 7
Suite #170

Royal Palm Beach, FL 33411

Call Dr. Jonathan Chung at
(561) 247-0044
to schedule your appointment today

Mention this ad and receive a gift certificate
applicable to your structural exam

Keystone Chiropractic is focused on structural correction of the spine. We use state of the art technology and techniques to restore full function of the spine and nervous system to allow the innate recuperative capacity of the body to work optimally.



FLANIGAN'S
SEAFOOD BAR AND GRILL



**ALL NIGHT
HAPPY HOUR**

**EVERY NIGHT
9PM - CLOSE**

ALL SEATING

UP TO 50% OFF
ALL BRANDS OF BEER, LIQUOR & WINE

**Good luck to all the participants
in the WSC Shoot-out**

Come see us, we're...less than 5 minutes away

2335 State Rd 7, Wellington, 33414

Phone: 561-422-0988

FLANIGAN'S
SEAFOOD BAR AND GRILL



2013-2014

Future Soccer Superstar Training

Let our Friday night training take your Soccer Superstar to the next level! Players will learn important skills including *BALL CONTROL* while *DRIBBLING, SHOOTING* and *PASSING*.

Training staff includes licensed coaches from

Wellington Soccer Club,

the official Travel Soccer League of Wellington.

Participants will develop individually and as a group.

Best of all, they will have **FUN** doing it!!

All participants will receive a **FREE** T-shirt.

Players must bring a ball and water bottle & wear shin guards and non-metal cleats.



Session 3

1/17, 1/24, 1/31, 2/7, 2/14, 2/21

Session 4

3/28, 4/4, 4/11 (no practice 4/18), 4/25, 5/2, 5/9

Registration **NOW** online at **www.wellingtonfl.gov**.

Click on **Departments > Parks & Recreation>Registration & Forms**
or in person at **Wellington Parks & Recreation Department** located at
11700 Pierson Rd. Wellington, FL 33414, 561-791-4005
For weather updates, call **561-791-4005, Option 1**

this ad book designed and layed out by



pawing pooch Studio

**freelance
graphic design
& art stuffs**

407-808-5518

pawingpooch@gmail.com

SCUBA WORKS A PADI 5 STAR DIVE CENTER

Daily Scuba Diving Trips • PADI Scuba Courses and Training
Scuba and Snorkel Gear Sales and Rentals

I DIVE WITH THESE GUYS!



SCUBA WORKS
JUPITER FL

561.575.3483 • WWW.SCUBAWORKS.COM



Atlantic
HEALTHCARE
PRODUCTS

Supports Your Team!

**Visit our new stores for all of your sport
injury & medical equipment needs**



www.AtlanticHP.com

West Palm Beach: 6782 Forest Hill Blvd 561-964-6767



Why wait for hours in the E.R.?

URGENT CARE
WALK-IN MEDICAL CENTER

561.333.4000

www.MyERdoctors.com

Laboratory and Digital X-Ray On-Site
Serving Wellington/Lake Worth/WPB

NO APPOINTMENT NEEDED!

OPEN 7 DAYS A WEEK FROM 8:30AM - 8:30PM

**SCHOOL AND SPORT
PHYSICALS**
\$20



	Forest Hill Blvd./882	
	Stribling Way	N.
Palomino Park		↑
	Palomino Dr.	Turnpike
	Lake Worth Rd./802	

3319 State Rd. 7, Suite 102 • Palomino Park
Wellington, FL 33449

American Academy of Urgent Care Medicine Accreditation

Kids & Adults
Cold & Flu
Sore Throat
Earaches
Eye Injuries
Job Related Injuries
& Workman's Compensation
Sprains & Fractures
Wounds, Burns & Bites
Urinary Infections
Asthma Problems
Lacerations
Neck & Back Injuries
High Blood Pressure
Dehydration
Car Accidents
Falls
School, Work Physicals
and Camp Physicals



**WELLINGTON SOCCER CLUB
TOURNAMENT**

@ Village Park off of Pierson Road, Wellington, Fla.

January 10, 11 & 12, 2014



**BRING IN
THIS FLYER AND
GET A 15% DISCOUNT
OFF YOUR CHECK!**



With about 200 Teams Participating



**A LEADER IN
METALS RECYCLING**

**7796 BELVEDERE RD.
WEST PALM BEACH, FL**

561-689-0909

WWW.PALMBEACHMETAL.COM

Palms Stables



Boarding • Lessons • Training

Come ride in our family friendly environment & experience our affordable, full-service barn located in the heart of Wellington's elite equestrian community.

We Provide: full boarding • horse sales & leases
top notch trainers • state-of-the-art facilities
lessons/training for riders of all levels

561-252-2121

www.PalmsStables.com

13345 57th Street South • Wellington, FL 33449

FAVER

EQUINE QUARANTINE OSSIAN VENTURES, LLC

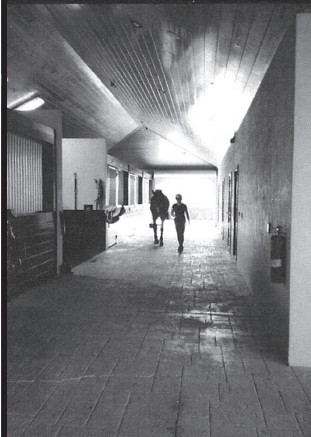
*A Licensed CEM Quarantine Facility for
Stallions and Mares, as well as, An Export Quarantine*



We are excited to announce that Richard M. Faver Inc. Equine Quarantine (formerly South Florida Equine Quarantine), has relocated to its new, permanent, year round location at Ossian Ventures, LLC.



- Open 7 days a week with the flexibility to meet clients busy competition schedules.
- 32 12X12 matted stalls with an automatic fly system and a 24 hr video surveillance system.
- 2 tack rooms, 2 feed rooms, 2 laundry/storage rooms, all are air conditioned.
- 120'X210' riding arena with a custom blend of "Travel Right" footing.
- An acre and a half Bermuda turf jumping field with an open water, hedge jump and ditch.
- 60 M, 6 horse, Belebrow walker with a rubber floor.
- 60 M round pen, also with custom footing for lunging, long lining, etc.
- 8 grass turnout paddocks.
- Client lounge with a full bathroom, refrigerator, microwave, DVD player and sitting area.



We have brought together the most experienced staff to give you a quarantine facility of the highest standards. The veterinary clinic we use is the largest and most experienced in the area. Attention to detail makes our facility easy to work out of and it's quiet beauty ensures your horses' happiness. All these factors combined provide you with the exceptional care and service you and your horse deserve. Now, with our amazing new location, your choice is clear.

Located at: 12455 Indian Mound Road
Wellington, FL 33449
To Make Reservations Call 561-644-2711
www.EquineQuarantine.com



MOKSHAYOGASTUDIO



VINYASA
ASHTANGA
SLOWFLOW
YIN YOGA
KRIPALU
RESTORE
KIDS YOGA
STRETCH RESULTS
YOGA FUSION
WORKSHOPS



**NEW STUDENT
SPECIAL
\$100 FOR
2 MONTHS
UNLIMITED**

COME PLAY!

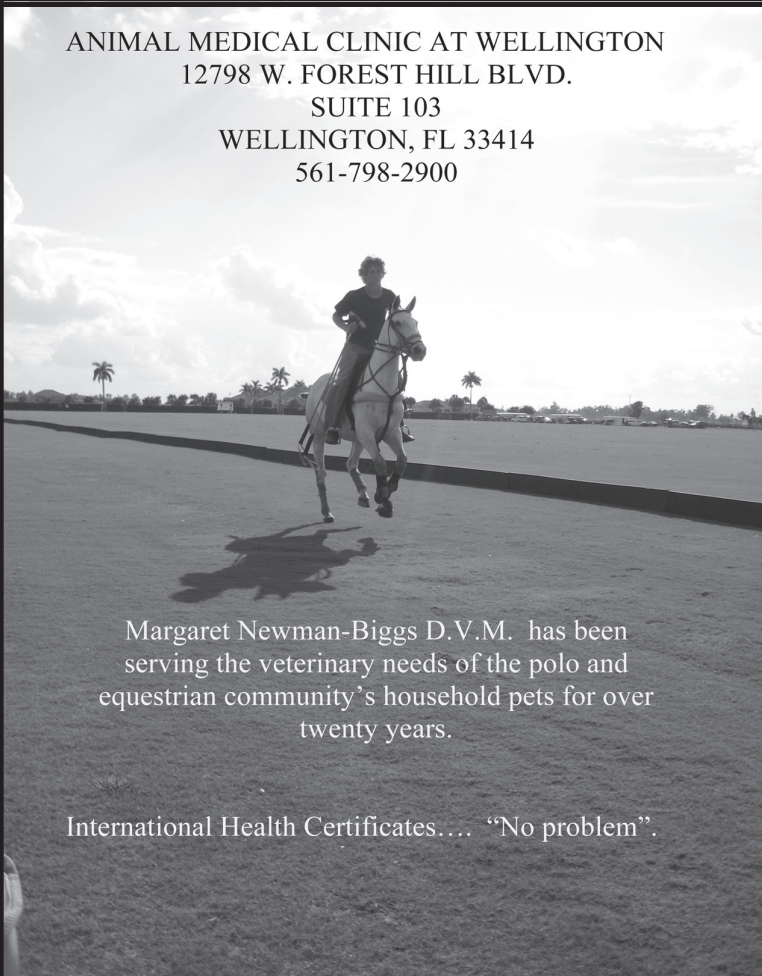


LIBERATE YOUR MIND, BODY & SOUL!

**3340 FAIRLANE FARMS RD., # 5
WELLINGTON, FL 33414
561.427.1767**

**FOR SCHEDULE & CLASS INFO, GO TO...
www.mokshayogastudio.com**

**ANIMAL MEDICAL CLINIC AT WELLINGTON
12798 W. FOREST HILL BLVD.
SUITE 103
WELLINGTON, FL 33414
561-798-2900**



Margaret Newman-Biggs D.V.M. has been serving the veterinary needs of the polo and equestrian community's household pets for over twenty years.

International Health Certificates.... "No problem".

WAY TO GO MACI!

Love You!
Gaga and Poppy
Bar Ten Creek Ranch



Official Jerseys - Shorts - Soccer Shoes - Balls
Everything for the Soccer Player and Soccer Fan



Visit our Store at
The Mall at Wellington Green

Store #4 The Mall at Wellington Green
10300 W. Forest Hill Blvd. #193 • Wellington
561-795-6933

Store #1 DORAL • 7930 NW 36 St. #26, Miami FL 33166 • 305-477-0414
Store #2 BAYSIDE MALL • 401 Biscayne Blvd., Miami FL 33132 • 305-371-2111
Store #3 DOLPHIN MALL • 11401 NW 12 St, Miami FL 33172 • 305-640-3036

**Mad
about
soccer**

The Most Complete Soccer Store

madaboutsoccer.net

\$10 off

with this coupon
and your purchase
of \$50 or more
(valid for regular
priced items.)





JC White is South Florida's Premiere Contract Dealer. We are your one stop center for quality office furniture, featuring an extensive design center, and two convenient locations to serve you.

With over 30 years of experience, we are proud of our reputation of being a customer service oriented company.



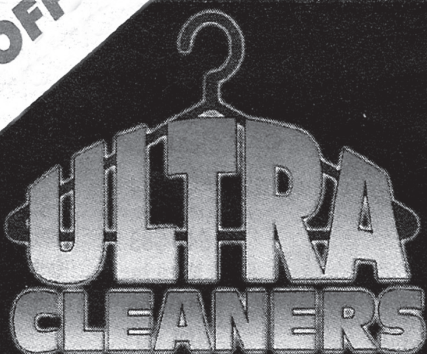
7891 Central Industrial Drive
Riviera Beach, FL 33404
561.848.4982
www.jcwhite.com



We've Moved!

Come visit our new location!
SAME FRIENDLY SERVICE • SAME EXPERT TAILOR
SAME OUTSTANDING QUALITY!

BRING IN AD FOR **15% OFF** YOUR NEXT DRY CLEANING ORDER!



Conveniently
located around the
corner from LA Fitness,
2 stores left of Jamba Juice

The Pointe at Wellington Green
10160 W. Forest Hill Blvd., Suite 120
Wellington • (561) 753-6200



**Proud Supporters of the
Wellington Wave Soccer Club!**



**Good Luck to Luke Mattessich & the U13
Boys White Team in your Soccer Shootout!**



877-811-FUEL
www.ssipetro.com

Palm Beach SKATEZONE

Ice & Roller Skating - Hockey - Parties!



**\$10
OFF**

ANY BIRTHDAY PARTY,
SKATING CLASS, OR
HOCKEY CLASS WHEN
YOU PRESENT THIS AD!

CANNOT BE COMBINED WITH OTHER OFFERS AND DISCOUNTS

8125 LAKE WORTH ROAD, LAKE WORTH 33467
561-963-5900 www.PBSKATEZONE.COM



SKATE ZONE FEATURES

2 ICE RINKS
1 ROLLER RINK
2 SNACK BARS
FULL PRO SHOP
AND MORE!



VHS Tape

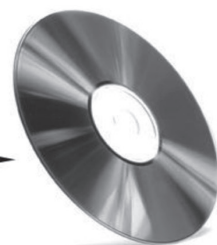


Cine Film



8mm Camcorder

DVD Transfer



ALL-SUN MEDIA

35 Years Serving South Florida

TRANSFERS ★ COPIES ★ PRODUCTIONS

All Media to DVD or CD ♦ DVD/CD Multi Copies
8mm/16mm Movie Film ♦ Hard Drives ♦ Photos
Foreign Conversions ♦ Audio Reels ♦ Audio Tapes
HD Video Productions ♦ HD Editing

ALL VIDEO SERVICES

★ ALL WORK DONE ON PREMISES ★

561-798-9339

11369 Okeechobee Boulevard, Royal Palm Beach, FL 33411
allsunmedia@bellsouth.net
www.allsunmedia.com



Deanna Renee's
(561) 315-7288

FREE HAIRCUT WITH ANY
COLOR SERVICE FOR ALL
NEW CUSTOMERS

Phenix Salon Suites

100 Sansburys Way, • Suite 111 • WPB, FL 33411

empire

PEST DEFENSE

"The Ant Experts"

General Pest Control
Termite and Lawn & Ornamental
Whitefly Treatments

Glade Peterson

Owner

(561) 281-5469

ggglade@yahoo.com

www.empirepestdefense.com



puppyarazzi
Grooming
Where your pet is the star

Professional, Caring groomers for over 15 years

© 561-429-5589

13873 Wellington Trace B-11, Wellington, FL 33414
puppyarazzi@aol.com

50% off
ANY FULL DOG
GROOMING

PUPPYARAZZI GROOMING 561-429-5589

New Clients/Dogs Only with this coupon. Not to be
combined with other offers.



dream
big.

I am living proof.



A few months before the summer Olympics, I fell off my horse and completely shattered my knee. When the doctors told me I needed surgery, I was devastated. How could I recover in time to qualify for the U.S. team? To give me my best shot, I needed a stellar orthopedic team and found it at Wellington Regional.

My surgery was on January 14 and by April, I was back in the saddle. Thanks to specialized care, I qualified for the Olympic team and went on to compete in London. **I am living proof of first-class orthopedics at Wellington Regional.**

McLain Ward
Olympic Gold Medalist



Orthopedic Program

To read more of McLain's story, visit
WellingtonLivingProof.com

Need A Doctor? Call Our FREE Physician Referral Service, Direct Doctors Plus®: **561.798.9880.**

Physicians are independent practitioners who are not employees or agents of Wellington Regional Medical Center. The hospital shall not be liable for actions or treatments provided by physicians.

TheHomeProsFL.com



Exceptional Agents, Exceptional Results



Adrienne Carruthers / Denise West / Heather Suarez / Maria Gionta

***Call us for all of your Residential Real Estate
needs!***

Heather C Suarez & Adrienne Carruthers

561-320-3338

Denise West & Maria Gionta

561-320-3558

**12008 South Shore Blvd, Suite 201
Wellington, FL 33414**



STRIKER SOCCER SUPPLY

AUTHENTIC SOCCER

1.888.335.4625 WEST PALM BEACH FL

**\$10
OFF**

EXP 5/20/2014

**Any
Purchase
over
\$100**

OFFER CANNOT BE COMBINED
WITH ANOTHER OFFER.

**25%
OFF**

EXP 5/20/2014

**ANY
APPAREL**

OFFER EXCLUDES
ALL WORLD CUP PRODUCTS
BARCELONA. REAL MADRID
GAME JERSEYS

OFFER CANNOT BE COMBINED
WITH ANOTHER OFFER.



[Instagram.com/AuthenticSoccer](https://www.instagram.com/AuthenticSoccer)



 [/AUTHENTICSOCCEr](https://www.facebook.com/AuthenticSoccer)

 [/AUTHENTICSOCCEr](https://twitter.com/AuthenticSoccer)

**1948 N. MILITARY TRAIL
WEST PALM BEACH FL 33409**

Simon

ORTHODONTICS

*There's never been a better time for a beautiful smile!
Call today for your complimentary orthodontic evaluation!*

New Year savings of
\$250
when you
start treatment by
March 15, 2014

- Flexible financing
- Most insurance accepted
- Evening hours
- Se Habla Español

DAMON[®]SYSTEM
More than straight teeth[™]

 **invisalign**[®]

Patients treated by
Dr. David Simon

(561) 333-3055

10115 Forest Hill Blvd. • Suite 301 • Wellington, FL 33414
3472 Forest Hill Blvd. • Suite 1 • West Palm Beach, FL 33406

www.simonorthodontics.com



HOOVER

CANVAS AWNINGS

Because Everyone Loves Shade



5107 North Australian Ave.
West Palm Beach, FL 33407
561-844-4444

"Simply The Best"
Since 1949

844 NW 9th Ave.
Ft. Lauderdale, FL 33311
954-764-1711

www.hoovercanvas.com

Exceptional Landscapes



GROUNDWORKS

sales@datepalm.com
(800)753-5127
www.datepalm.com

8140 93rd Lane South
Boynton Beach FL, 33472
www.specpalm.com



**Where You're Eating With
Friends!!**

**10880 Forest Hill Blvd
561-798-MACS**

**See You After the
Game!!**

www.bonefishmacs.com



*Kick off the season
and score big with
this winning offer!*

Over 100 years ago our family had a big goal,
and that was to grow the highest quality,
most nutritious vegetables possible.

Today, that dream is a reality and we're proud
that we're reaching millions of your homes
with exceptional vegetables grown right here
in your Florida community.

So, the next time you visit your produce
department catch the winning brand that's
the home team, because we care about
keeping your family healthy and delivering
more strength to help win the game.



Since 1908
Our goal is healthy living!

www.PeroFamilyFarms.com



Pero Family Farms Food Company, LLC
Delray Beach, Florida

PERO Family Farms
www.PeroFamilyFarms.com

MANUFACTURER'S COUPON

a **Sweet**
deal
for YOU!

SAVE 35¢
on your next purchase
of Mini Sweet Peppers

see reverse side for details
Manufacturer's Coupon | Offer Expires March 31, 2014
Limit one coupon per customer Do Not Double

0874896-021315

5 74896 50035 2

Valid only on one Mini Sweet Pepper package from Pero Family Farms Food Company, LLC. Not valid on any other brand or variety of peppers. Not valid in conjunction with other offers. Void if reproduced. Any other use constitutes fraud.

PERO Family Farms
www.PeroFamilyFarms.com

MANUFACTURER'S COUPON

save some
Green
on YOUR
Beans!

SAVE 35¢
on your next purchase
of Snipped Green Beans

see reverse side for details
Manufacturer's Coupon | Offer Expires March 31, 2014
Limit one coupon per customer Do Not Double

0874896-021314

5 74896 50035 8

Valid only on one Green Bean package from Pero Family Farms Food Company, LLC. Not valid on any other brand or variety of beans. Not valid in conjunction with other offers. Void if reproduced. Any other use constitutes fraud.

Try our Mini Sweet
Peppers
and
Snipped
Green Beans.

We think you'll agree
they can't be beat!

Our goal is
healthy living!



Manufacturer's Coupon

COUPON EXPIRATION DATE 03/31/14

Pero Family Farms Food Company, LLC
Delray Beach, FL 33446

Consumer: Valid only on Mini Sweet Pepper packages from Pero Family Farms Food Company, LLC. Not valid on any other Pero branded products. Not valid in conjunction with other offers. Void if reproduced. Any other use constitutes fraud. Consumers are limited to one coupon per purchase and are responsible for all taxes. Cash value is .0001 cents.

Retailer: Pero Family Farms Food Company, LLC will reimburse you the face value of this coupon plus 8 cents handling for coupons redeemed in accordance with this offer. Invoices proving purchase of sufficient stock to support coupon submissions must be provided upon request.

www.PeroFamilyFarms.com

Limit one coupon per customer Do Not Double



Think
Fresh!



Manufacturer's Coupon

COUPON EXPIRATION DATE 03/31/14

Pero Family Farms Food Company, LLC
Delray Beach, FL 33446

Consumer: Valid only on Green Bean packages from Pero Family Farms Food Company, LLC. Not valid on any other Pero branded products. Not valid in conjunction with other offers. Void if reproduced. Any other use constitutes fraud. Consumers are limited to one coupon per purchase and are responsible for all taxes. Cash value is .0001 cents.

Retailer: Pero Family Farms Food Company, LLC will reimburse you the face value of this coupon plus 8 cents handling for coupons redeemed in accordance with this offer. Invoices proving purchase of sufficient stock to support coupon submissions must be provided upon request.

Send all coupons to: PERO/Universal, P.O. Box 222510, Hollywood, FL 33022-2510.

www.PeroFamilyFarms.com

Limit one coupon per customer Do Not Double



Think
Fresh!



Since 1908

www.PeroFamilyFarms.com



Pero Family Farms Food Company, LLC
Delray Beach, Florida



CASE *ii*

Glade & Grove Supply Co., Inc.

P.O. DRAWER 760, BELLE GLADE FL 33430

Bus. 561.996.3095
Wats. 800.433.4451
Fax. 561.992.6246

gladeandgrove.com



Making Life Sweeter



Domino Foods, Inc. is proud to
support the community and is
committed to green business
practices that make everyone's
life a little sweeter.



©2014 Domino Foods, Inc.



Domino Foods, Inc.
Consumer